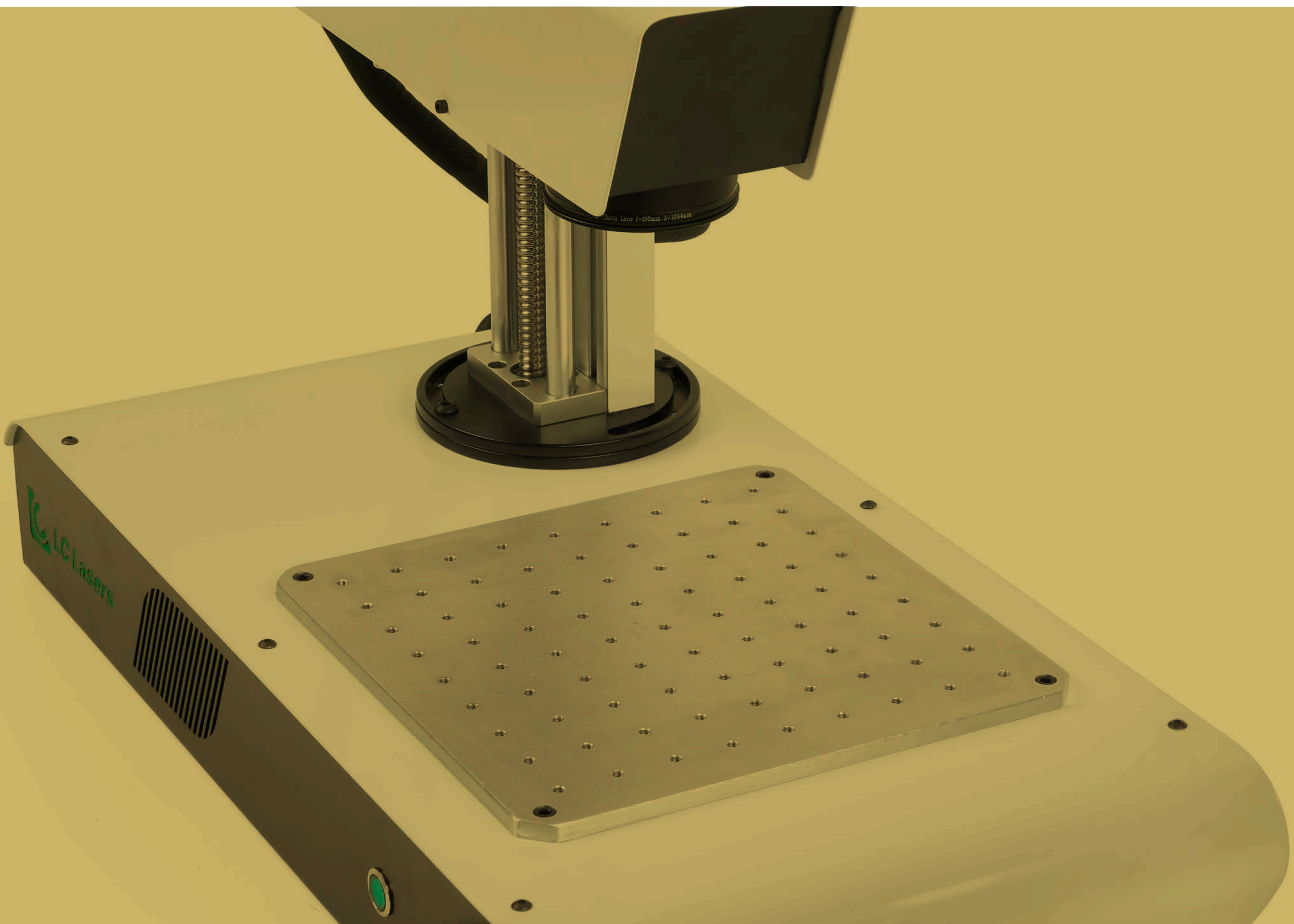

Fiber Laser Marking



Company

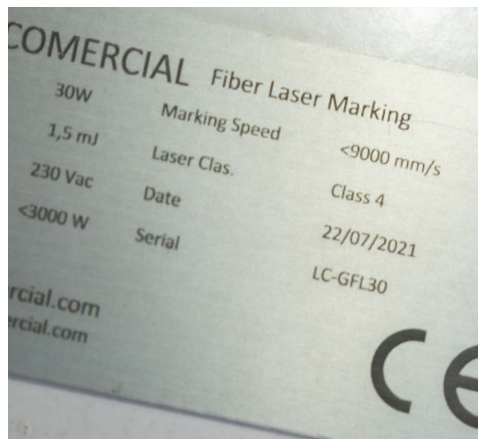
LC is a leader in laser technology, we develop all kinds of solutions for industries and businesses.

We have a qualified team with great experience in laser and eco-efficient technologies.

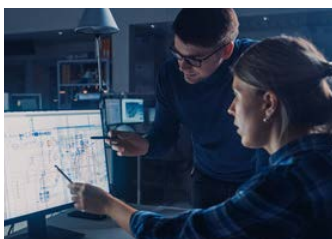
We are a company committed to industrial productivity, energy efficiency and taking care of the environment.

Our biggest goal is to make laser technology accessible worldwide, we want to share our knowledge and make the job as easy as possible.





Manufacturing Laser Technology



Analysis

Day by day we work to give our clients the best service. We want that every laser equipment is the most suitable for every case. LC is committed to offer the best option in the laser technology world, we will advise you so you can make the perfect decision. We offer 100% personalized solutions to each client.



Production

LC produces laser equipment in our facilities, to provide a faster, more efficient and higher quality service. Thanks to our production system we can ensure every detail is perfect and our machines are ready to work.



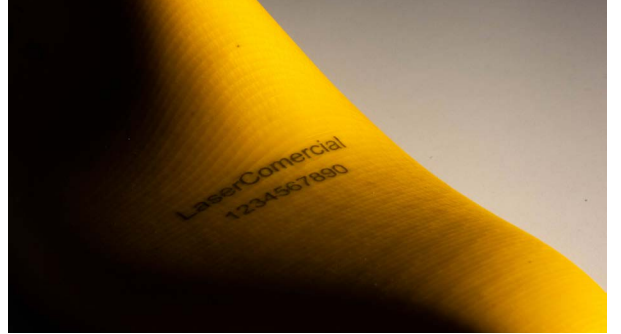
Quality

Our components are top brands so that your laser equipment works 100% from the first moment. We work with a rigorous system to improve controls and ensure the best performance of the equipment.



After-sales service

We offer a comprehensive after-sales service, with telephone, face-to-face assistance and an online service of video tutorials to solve doubts easily and give the opportunity to learn new capabilities of our laser machines. We want to offer the fastest and most efficient solution possible.



Our machines incorporate a Fiber laser and “Galvo” control technology allowing marking all types of metals and plastics at an impressive speed. Laser marking reaches incredible speeds thanks to Galvo technology. Unlike CNC technology, the laser head must not be positioned at the point where we want to mark. Two mirrors located at a greater distance from the material are used that rotate quickly and reach the positions more quickly. This technology means that the head does not have to reach the places to mark, but rather it remains fixed. Different types of lasers can be incorporated depending on the material we want to work with.

Laser Type and Technology



1 Fast engravings

2 High quality and marking speed

3 Precision for complex details

Laser marking machines are laser instruments used to mark and engrave in some cases they can even cut some materials (although it is not the most efficient option). This type of laser machine is perfect for engraving and marking of all kinds of materials in a repetitive and fast way, but on the other hand, they have a smaller work area.

Laser engraving works at maximum speed, increasing productivity and efficiency in the work carried out. The marking speed can be very high, reading 8000 mm / s for linear engraving or even more. Parts can be marked in a matter of seconds or milliseconds

These equipments generally occupy little space compared to other laser machines. This means more portability and versatility and we can even take the head with us and mark in more complex places that with a CNC system would be impossible to reach.

Laser marking equipment, has a much lower maintenance compared to laser engraving and cutting equipment using computerized numerical control technology (CNC).

It's very profitable and efficient equipment, due to their durability and efficiency, they make these laser machines an essential tool in many industries.

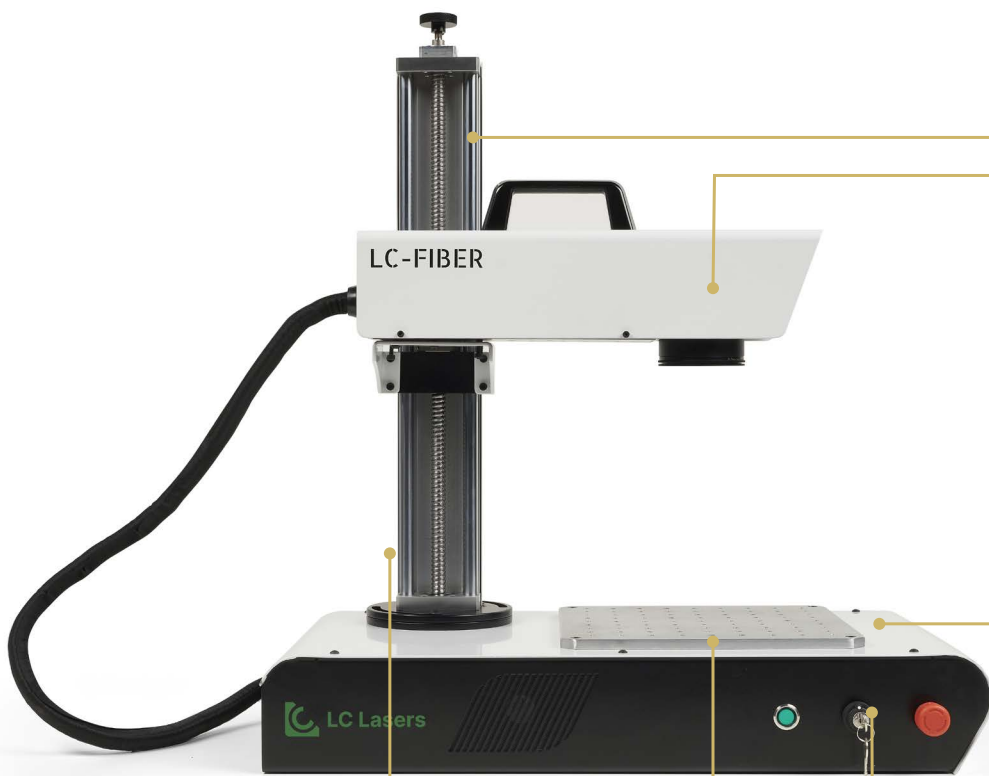


Fiber Laser Marking Machine

Compact and complete laser marking machine. Model MADE EXCLUSIVELY by LC. Easy and maneuverable system.

Perfect for all kinds of applications such as steel, brass, silver, gold and different plastics.

Our laser marking machines are perfect for quick engravings. Ototainings high quality and excellent results.

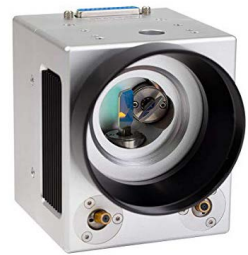


Quality laser



High-end laser. The best quality at the best price.

Galvo Head



Mirror system that allows fast and reliable laser marking.

Plug and Play



Connect the machine to a computer and straight away working.

Key opening



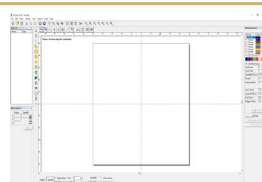
Security key opening system to turn on the machine.

Adjustable scale



System that allows height adjustment to adapt the laser to each thickness.

Software



Easy and intuitive software It has a graphic editor or if you prefer, import your files from other programs.

Work table



Worktable with perforated slots that allow optimization of production.

General characteristics

360° movement

The head of the machine can be moved up to 360° working range.

www compatibility

The software accepts import of different types of files such as AI, dxjf, Jpeg or Png, among others.

Compact and customizable design

The design of the machine is maneuverable and adaptable to the needs of the user.

Varieties to engrave and

You have the option of marking and engraving with many varieties (1-400kHz).

High speed

The working speed can reach up to 8000 mm/s.

Adjustable height

The height can be adjusted up to 500 mm (customization possible).

Modular design

Complements and particularities can be added depending on the work to be done.

Fully designed manufactured

by LC.



LC-MARK



LC Mark

- Compact and complete laser marking machine. Model manufactured exclusively by LC.



Materials



Table of Materials

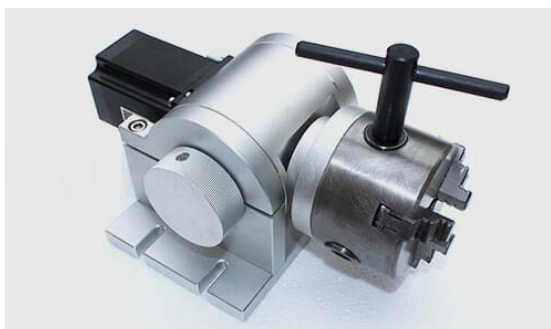
	ENGRAVING	CUTTING	MARKING
Stainless steel	✓	-	✓
Carbon steel	✓	-	✓
Aluminum	✓	-	✓
Copper	✓	-	✓
Gold	✓	50W	✓
Silver	✓	50W	✓
Painted acrylic	✓	-	✓
Glass Spray	✓	-	✓
PVC	✓	-	✓

1
Compact

2
Adaptable

3
Easy and intuitive

Accessories and extras



Rotary system

Rotary system



Pedal

Increase your working speed with a foot switch.



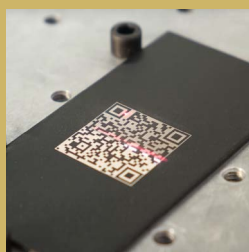
Protective cabin

It allows you to work efficiently and safely without wearing protective glasses.

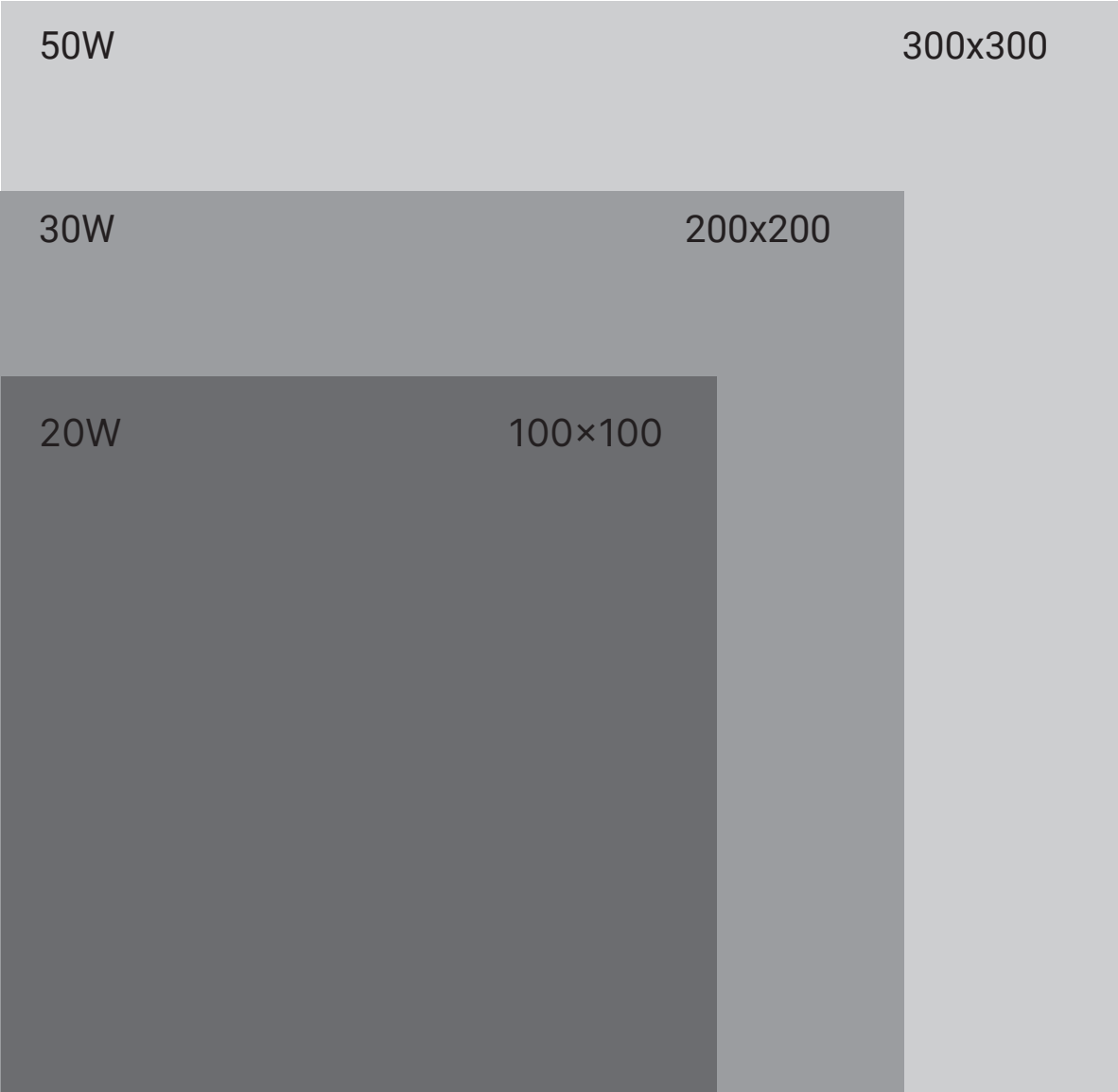
Applications and Industry

Laser marking equipment has a lot of applications in many industries. Implement internal references, barcodes, QR codes, expiration or production dates, among other options. These machines are perfect in sectors such as food industry, machining or the automotive industry.

These machines allow you to customize items. Through laser marking you can achieve incredible results and very quickly. You can engrave images, letters, vectors and many other types of documents or designs.



Options availables



Technical information

	20W	30W	50W
Working area	100x100	200x200	300x300
Wavelength	1064nm		
Beam quality	M2<1.3		
Output power	10%-100% (It can be adjusted)		
Output frequency	1KHz - 400KHz		
Power stability	<±1%rms		
Focus point diameter	<0.01mm		
Recorded range	≤400*400mm (customized)		
Engraving depth	<1.2mm		
Engraving speed	800 standard characters / second		
Minimum line width	0.012mm		
Minimal character	0.1mm		
Repetition accuracy	±0.003mm		
Operating system	Windows 7 / Windows 10		
Cooling mode	Air cooling		
Room temperature	10°C~33°C		
Environment humidity	20%-80%		
Electrical parameters	220V/Singlephase/50Hz/<2000W		
Laser life time	100 000 hours		
Host size	400mmx350mmx635mm		





Tomàs Viladomiu, 61
08650 · Sallent
Barcelona (Spain)

T. +34 936 281 426

info@lclasers.com



www.lasercomercial.com

02.03.01_EN_002